



MOVING YOU FURTHER

*25·30·32*

**35B-9U**



Some of the photos may include optional equipment.

 **HYUNDAI**  
MATERIAL HANDLING

# Your satisfaction is our priority.

## Proven AC technology! Hyundai 9 Series battery forklift

Introducing the new, upgraded Hyundai 9 Series electric pneumatic tire forklift.

The new B-9U Series brings customer added value to the next level by dramatically improving energy costs and enhancing powertrain durability.

### Work efficiency & productivity

- 32% increase in energy efficiency with EHPS (Electro Hydraulic Power Steering) system application
- Powerful and precise driving performance of dual drive motors
- Vehicle performance optimized for various working conditions
- Directional & horn switch on lever (OPT)
- 2 Door bolt on type cabin (OPT)

### Durability & reliability

- Stiffer drive unit input shaft
- Dual micom with improved data processing reliability : ZAPI Controller
- Semipermanent Oil Cooled Disc Brake
- IP43 Motor & IP65 Controller

### Safety

- EHPS (Electro Hydraulic Power Steering)
- Automatic deceleration in travel speed when turning (at curve)
- Prevention of rear roll back when restarting after ramp stop
- Maximum driving speed setting
- Operator presence sensing system (OPSS)

### Easy management

- Self-diagnosis of electric system failure
- Durable Continental solid tire
- Brake fluid level sensing system



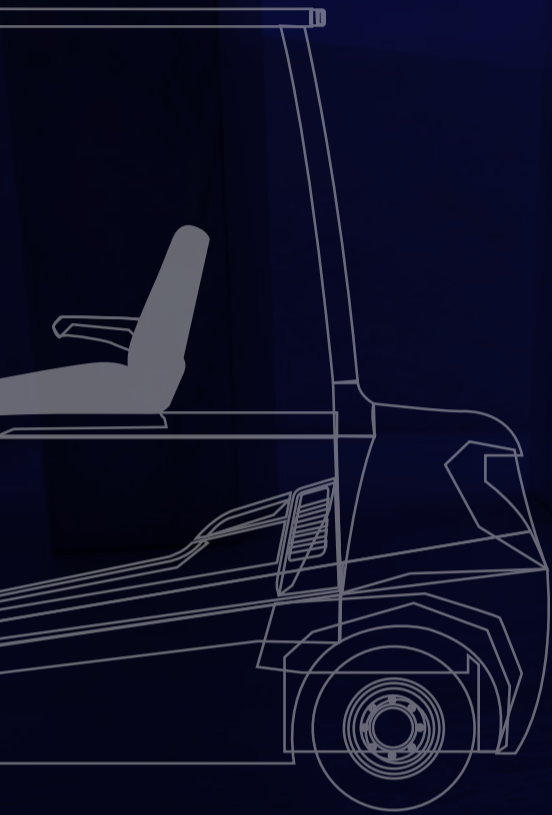




## Power & Performance

# High Efficiency & Optimal Performance

An efficient, smooth running and compact design provides enhanced performance and outstanding productivity.



Some of the photos may include optional equipment.

## Strong driving power : Dual drive motor system UPGRADE

The dual drive motor system consists of two separately controlled drive motors. Unlike the single drive motor system, it prevents the wheels from spinning even when the grip force of the left and right wheels is different. In addition, it enables strong drive performance even on a dirty road. As the pivot point is the axle of the wheels, the dual system enables relatively small turning radius compared to the single system, thus improving efficiency in small worksites.



Some of the photos may include optional equipment.

## Improvement in energy consumption

EHPS (Electro Hydraulic Power Steering) system only functions when the driver operates the steering handle and significantly reduces the energy consumption rate because unlike the existing hydraulic power steering (HPS) system, it does not have a standby mode or a priority valve for supplying hydraulic power to the steering line. Moreover, the hydraulic pump noise generated from the steering standby mode of the HPS system has been completely eliminated.

Previous model (25B-9 : 715Ah) : 185 minutes (100%)

Upgraded model (25B-9U : 660Ah) : 259minutes (140%)

\* The figures above are based on Hyundai's test results for a single charge cycle and may differ from actual working conditions.

UPGRADE



**EHPS (Electro Hydraulic Power Steering)**

Equipped with both the energy efficiency of the electric power steering system and the stability of the hydraulic power steering system, the EHPS system is composed of a torque sensor, controller, motor, hydraulic pump, and steering cylinder, and operates efficiently with little energy required.

UPGRADE



**Dual MiCOM ZAPI controller**

With a dual micom on the inside, ZAPI's new AC controller safely controls the forklift by processing signals and faults via a two-way method, and is protected from moisture and other pollutants as IP65. Also, the drive controller capacity is optimized and a left and right split structure is adopted to reduce energy consumption.



**Robust and economical AC motor**

The enclosed drive and pump motor with AC technology combine power, extended maintenance intervals and excellent durability. The brushless AC motors offer improved efficiency and reduction maintenance cost. It is certified IP43.



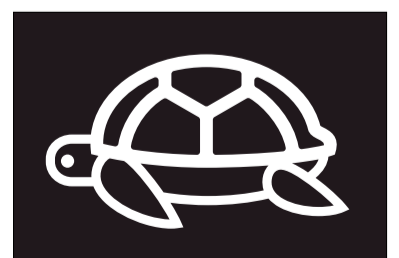
**Wet disc brake**

The semi-permanent wet disc brake provides constant braking force without overheating even when used for long hours of repetitive work, thus improving work efficiency.



**Optimized operation mode setting**

Through the cluster and ZAPI controller function, optimal performance mode-H (High), N (Normal), E (Economic)- can be selected based on working conditions, worksite size and operator's proficiency.



**Turtle mode**

Selecting turtle mode allows the operator to reduce travel to a pre-set speed, which is ideal when working in narrow and or congested work areas.

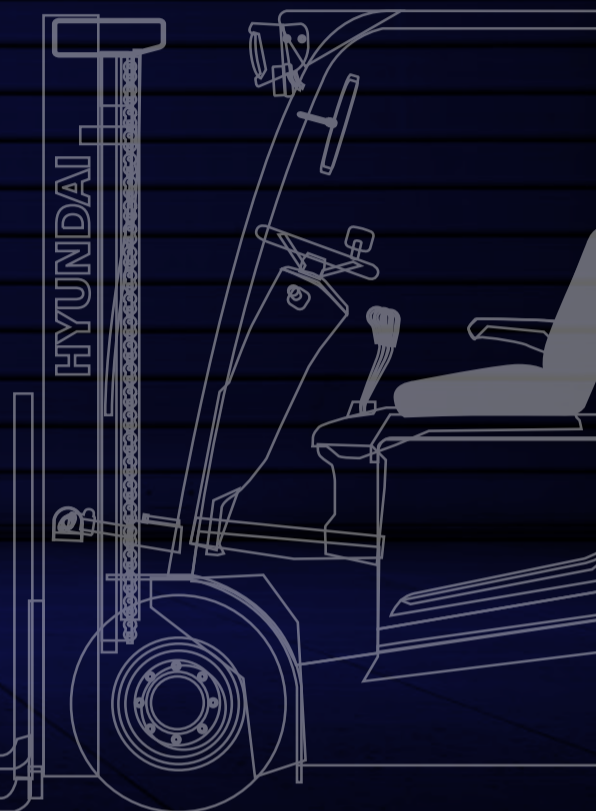




Easy & Comfort

# Optimized Ergonomics & Fast and Easy Maintenance

An ideal arrangement of components ensures easy access and convenience for maintenance.



Some of the photos may include optional equipment.

## Ergonomically designed workspace

Ergonomic design focusing on operator convenience and maneuverability further enhances work efficiency. Easy to operate levers and pedals, adjustable handle, suspension seat and a large multi-functional cluster dashboard allow comfortable and efficient driving. A 12V power socket is a standard feature to improve operator convenience.



Some of the photos may include optional equipment.



### Grammer seat

An adjustable ergonomic seat provides unmatched comfort. The adjustable armrest further reduces operator fatigue.

- Accommodates operator weights from 50 to 160 kg.
- ELR (Emergency Locking Retractable) type seat belt
- Heater and headrest (OPT)

## 4.3inch LCD color monitor

The LCD color monitor with 4.3 inch graphic smart display allows the operator to identify speed, travel direction, and operating hours and control the machine efficiently. The load indicator displays the load weight in the monitor. The operator can select various performance modes to meet all working conditions. Multilanguage (maximum 11) is available.



### Main functions

- 1 Speed (Digital)
- 2 Steering wheel position and travel direction
- 3 Battery discharge indicator
- 4 Scroll up
- 5 Menu / Scroll Left
- 6 Performance / Scroll right
- 7 Turtle / Scroll down
- 8 ESC / Back
- 9 Enter
- 10 Low brake oil warning lamp
- 11 Error warning lamp
- 12 High temp warning lamp



### Steering wheel position

A steering sensor is applied to the king pin of the rear axle, communicates to the LCD color monitor to show the direction of the vehicle as it relates to the angle of the steer wheel.



### Directional & horn switch on lever (OPT)

An optional electronic directional control and secondary horn are mounted to the hydraulic lift lever for quick and precise directional control. Also, the position of the horn button provides quick access if needed.



### Adjustable tilting handle

The handle angle can be adjusted with the lever on the right side of the steering wheel to suit the operator's physique and driving habit.



### Easy maintenance of battery

The battery cover opens fully with the assistance of a gas strut that locks when fully opened to give easy access to battery and prevent the hood from dropping.



### Brake oil reservoir with level sensor

The enhanced brake oil reservoir, located in the upper left dash is equipped with an electronic level sensor that shows the level in the LCD color monitor.

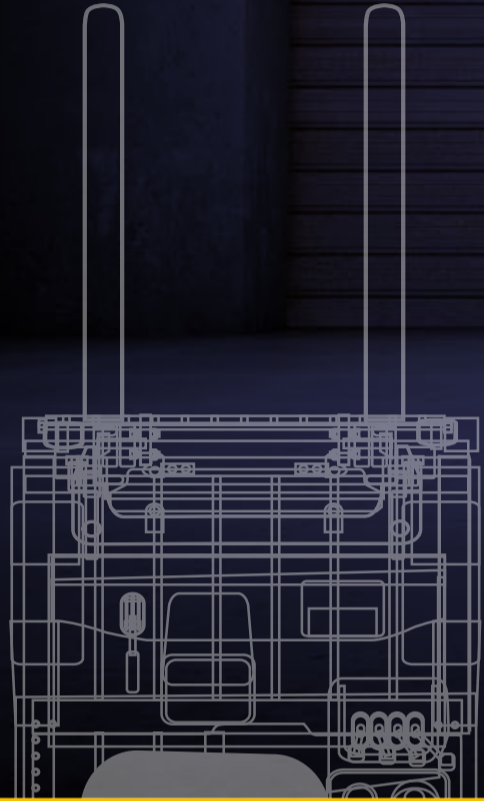




Secure & Safety

# Advanced Safety

The safely designed driver's space makes your operating more comfortable.



EXCELLENT VISIBILITY

ADVANCED SAFETY



Some of the photos may include optional equipment.



You can see the video by scanning the QR code.

## Excellent visibility for safe operation

Lift cylinders and lifting chains are positioned behind the mast rails for optimum visibility. A rear camera(OPT) and panoramic mirror expands the driver's view when backing up.



Some of the photos may include optional equipment.



### Strong overhead guard

Exceeding ISO6055 regulations, the overhead guard offers great protection combined with excellent all around visibility.



### Curve control

Curve Control limits travel speed based on turning radius, reducing speed for a smooth, precise turning operation for the driver.

### Maximum speed control

The operator can set and limit the maximum speed from 10 km/h to 1 km/h unit, given the curve & congestion of an aisle and the shape of the load.

### Password starting system

The operator can set a password to prevent vehicle theft and possible safety accidents in case the vehicle is used by an unauthorized person.

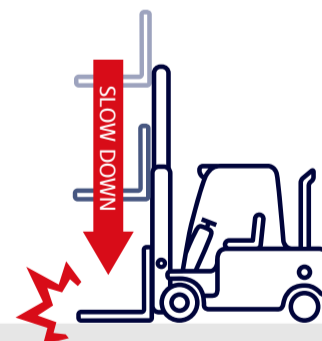
## Safety features

The adoption of a high-sensitivity sensor and advanced safety system can prevent accidents.



### Anti roll back system

Anti Roll-back system offers protection against the machine rolling back on a ramp in combination with exceptional ramp start capabilities.



### Fork safety features

As the forks are being lowered, a down-control valve maintains a controlled descent speed. The down-safety valve prevents forks from dropping down in case of sudden damage of hydraulic line.



### Operator Presence Sensing System(OPSS)

When operator is not in seat the hydraulic lift and tilt controls and travel are locked out.



### Strengthened work safety

Rear LED lights and halogen lights offer excellent visibility even during night operations. Safety has been increased by installing additional reflectors on the counterweight.





## High quality Li-ION battery (OPT)

Rapidly chargeable Li-ION battery ensure performance of the equipment with vastly reduced charge times, allowing extended hours of continued operation on a single charge. Moreover, it lasts at least twice longer than lead / sulfuric acid counterparts, and does not necessitate management of distilled water. Also, Li-ION battery using the prismatic cells provides excellent performance and safety.



### Benefits of HCE's Li-ION battery



#### Long hours of continuous operation

- Continued operations possible throughout the day with only auxiliary charge during equipment stoppage and meal time.
- No need for spare batteries and charging facilities.



#### Safety

- Multi-layered protection on cell.
- Enclosed battery case made of high-strength steel.
- Prevention of overheating, excessive electricity discharge or recharging through Battery Manage System.



#### Easy maintenance

- No need to replenish distilled water or electrolytes.
- Battery life at least twice longer than that of lead / sulfuric acid batteries. (over 4,000 cycles)
- No emission of harmful gases and no restriction on the charging location.

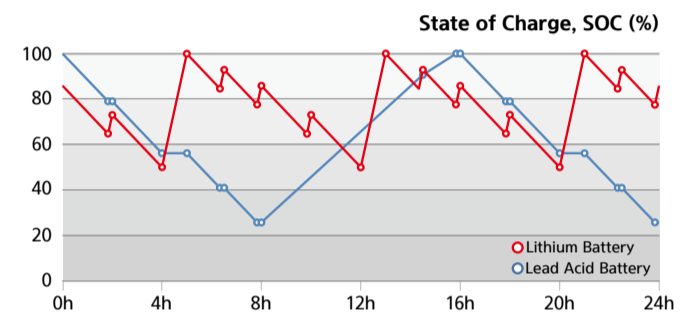


#### Cost savings

- Charging efficiency higher than lead / sulfuric acid batteries. (80% → 90%)
- 15,000 operational hours guaranteed for 5 years.



• Li-ION battery capacity :  
-25/30/32/35B-9U : 51.5V/564Ah



• Graph comparing the charge and discharge

## New 9 Series Mast Specification

### 25/30/32/35B-9U

#### 25B-9U

Mast Type	Maximum Fork Height	Overall Height (Lowered)	Free lift height			Tilt Angle		Load capacity (500mm LC) w/o side shift	Load capacity (500mm LC) w/ side shift	Truck Weight (Unloaded)	
			W/ Load Backrest	W/o Load Backrest	W/o Load Backrest (3/4-SPOOL)	Fwd	Bwd				
			mm	mm	mm	deg	deg				
2-STAGE LIMITED FREE LIFT	V300	3,005	2,012	115	115	115	6	10	2,500	2,500	4,339
	※V330	3,305	2,162				6	10	2,500	2,500	4,362
	V350	3,505	2,262				6	10	2,500	2,500	4,376
	V370	3,705	2,412				6	10	2,500	2,475	4,398
	V400	4,005	2,562				6	10	2,500	2,425	4,419
	V430	4,305	2,712				6	6	2,450	2,375	4,468
	V450	4,505	2,862				6	6	2,400	2,325	4,498
	V470	4,705	2,962				6	6	2,360	2,285	4,513
	V500	5,005	3,112				6	6	2,350	2,275	4,535
2-STAGE FULL FREE LIFT	VF/VS295	2,976	2,012	832	1,379	1,379	6	6	2,500	2,500	4,386
	VF/VS325	3,276	2,162	982	1,529	1,529	6	6	2,500	2,500	4,419
	VF/VS345	3,476	2,262	1,082	1,629	1,629	6	6	2,500	2,475	4,441
3-STAGE FULL FREE LIFT	TF370	3,705	1,812	632	1,179	1,179	6	6	2,500	2,475	4,517
	TF400	4,005	1,912	732	1,279	1,279	6	6	2,500	2,425	4,538
	TF430	4,305	2,012	832	1,379	1,379	6	6	2,450	2,375	4,560
	TF450	4,505	2,112	932	1,479	1,479	6	6	2,400	2,325	4,582
	TF470	4,705	2,162	982	1,529	1,529	6	6	2,350	2,275	4,594
	TF500	5,005	2,262	1,082	1,629	1,629	6	6	1,880	1,850	4,618
	TF550	5,505	2,462	1,282	1,829	1,829	6	6	1,550	1,430	4,659
	TF600	6,005	2,662	1,482	2,029	2,029	6	6	1,400	1,280	4,698
	TF650	6,505	2,862	1,682	2,229	2,229	3	3	1,350	1,230	4,737
	TF700	7,005	3,062	1,882	2,429	2,429	3	3	1,150	930	4,773
	TS370	3,705	1,812	632	1,179	1,179	6	6	2,500	2,475	4,517
	TS400	4,005	1,912	732	1,279	1,279	6	6	2,500	2,425	4,538
	TS430	4,305	2,012	832	1,379	1,379	6	6	2,450	2,375	4,560
	TS450	4,505	2,112	932	1,479	1,479	6	6	2,400	2,325	4,582
	TS470	4,705	2,162	982	1,529	1,529	6	6	2,350	2,275	4,594
	TS500	5,005	2,262	1,082	1,629	1,629	6	6	1,880	1,850	4,618
	TS550	5,505	2,462	1,282	1,829	1,829	6	6	1,550	1,430	4,659
	TS600	6,005	2,662	1,482	2,029	2,029	6	6	1,400	1,280	4,698
	TS650	6,505	2,862	1,682	2,229	2,229	3	3	1,350	1,230	4,737
TS700	7,005	3,062	1,882	2,429	2,429	3	3	1,150	930	4,773	
4-STAGE FULL FREE LIFT	QF610	6,115	2,147	967	1,413	1,462	3	3	1,650	1,480	4,912
	QF660	6,615	2,347	1,167	1,613	1,662	3	3	1,550	1,280	4,972
	QF700	7,015	2,447	1,267	1,713	1,762	3	3	1,300	980	5,002
	QF745	7,465	2,597	1,417	1,964	1,762	3	3	1,200	680	5,048
	QF790	7,915	2,747	1,567	2,114	1,762	3	3	750	480	5,148

※ TF-Mast : Wide Visible 3-Stage Full Free Lift Mast with 1 Free Lift Cylinders  
※ TS-Mast : Wide Visible 3-Stage Full Free Lift Mast with 2 Free Lift Cylinders

※ : Standard

#### 30B-9U

Mast Type	Maximum Fork Height	Overall Height (Lowered)	Free lift height			Tilt Angle		Load capacity (500mm LC) w/o side shift	Load capacity (500mm LC) w/ side shift	Truck Weight (Unloaded)	
			W/ Load Backrest	W/o Load Backrest	W/o Load Backrest (3/4-SPOOL)	Fwd	Bwd				
			mm	mm	mm	deg	deg				
2-STAGE LIMITED FREE LIFT	V300	3,005	2,012	115	115	115	6	10	3,000	3,000	4,614
	※V330	3,305	2,162				6	10	3,000	3,000	4,633
	V350	3,505	2,262				6	10	3,000	3,000	4,650
	V370	3,705	2,412				6	10	3,000	3,000	4,672
	V400	4,005	2,562				6	10	3,000	3,000	4,694
	V430	4,305	2,712				6	6	3,000	3,000	4,743
	V450	4,505	2,862				6	6	3,000	2,950	4,772
	V470	4,705	2,962				6	6	3,000	2,875	4,787
	V500	5,005	3,112				6	6	2,900	2,775	4,809
2-STAGE FULL FREE LIFT	VF/VS295	2,976	2,012	832	1,379	1,379	6	6	3,000	3,000	4,634
	VF/VS325	3,276	2,162	982	1,529	1,529	6	6	3,000	2,950	4,667
	VF/VS345	3,476	2,262	1,082	1,567	1,567	6	6	3,000	2,875	4,692
3-STAGE FULL FREE LIFT	TF370	3,705	1,812	632	1,117	1,081	6	6	3,000	3,000	4,779
	TF400	4,005	1,912	732	1,217	1,181	6	6	3,000	3,000	4,801
	TF430	4,305	2,012	832	1,317	1,281	6	6	3,000	2,950	4,821
	TF450	4,505	2,112	932	1,417	1,417	6	6	3,000	2,875	4,848
	TF470	4,705	2,162	982	1,467	1,431	6	6	2,950	2,825	4,863
	TF500	5,005	2,262	1,082	1,567	1,531	6	6	2,250	2,180	4,889
	TF550	5,505	2,462	1,282	1,767	1,767	6	6	1,750	1,570	4,931
	TF600	6,005	2,662	1,482	1,967	1,967	6	6	1,450	1,270	4,971
	TF650	6,505	2,862	1,682	2,167	2,167	3	3	1,400	1,220	5,012
	TF700	7,005	3,062	1,882	2,367	2,367	3	3	1,200	1,020	5,052
	TS370	3,705	1,812	632	1,117	1,053	6	6	3,000	3,000	4,779
	TS400	4,005	1,912	732	1,217	1,153	6	6	3,000	3,000	4,801
	TS430	4,305	2,012	832	1,317	1,253	6	6	3,000	2,950	4,821
	TS450	4,505	2,112	932	1,417	1,403	6	6	3,000	2,875	4,848
	TS470	4,705	2,162	982	1,467	1,403	6	6	2,950	2,825	4,863
	TS500	5,005	2,262	1,082	1,567	1,503	6	6	2,250	2,180	4,889
	TS550	5,505	2,462	1,282	1,767	1,753	6	6	1,750	1,570	4,931
	TS600	6,005	2,662	1,482	1,967	1,953	6	6	1,450	1,270	4,971
	TS650	6,505	2,862	1,682	2,167	2,167	3	3	1,400	1,200	5,012
TS700	7,005	3,062	1,882	2,367	2,367	3	3	1,200	1,020	5,052	
4-STAGE FULL FREE LIFT	QF610	6,115	2,147	967	1,514	1,514	3	3	1,700	1,520	5,153
	QF660	6,615	2,347	1,167	1,714	1,714	3	3	1,500	1,320	5,213
	QF700	7,015	2,447	1,267	1,814	1,814	3	3	1,200	1,020	5,243
	QF745	7,465	2,597	1,417	1,964	1,834	3	3	900	720	5,289
	QF790	7,915	2,747	1,567	1,987	1,834	3	3	700	520	5,390

※ TF-Mast : Wide Visible 3-Stage Full Free Lift Mast with 1 Free Lift Cylinders  
※ TS-Mast : Wide Visible 3-Stage Full Free Lift Mast with 2 Free Lift Cylinders

※ : Standard

### 32B-9U



Mast Type	Maximum Fork Height	Overall Height (Lowered)	Free lift height			Tilt Angle		Load capacity (500mm LC) w/o side shift	Load capacity (500mm LC) w/ side shift	Truck Weight (Unloaded)	
			W/ Load Backrest	W/o Load Backrest	W/o Load Backrest (3/4-SPOOL)	Fwd	Bwd				
		mm	mm	mm	mm	mm	deg	deg	kg	kg	
2-STAGE LIMITED FREE LIFT	V300	3,005	2,082	115	115	115	6	10	3,200	3,200	4,799
	※V330	3,305	2,232				6	10	3,200	3,200	4,820
	V350	3,505	2,332				6	10	3,200	3,075	4,828
	V370	3,705	2,482				6	10	3,190	3,065	4,846
	V400	4,005	2,632				6	10	3,120	2,995	4,863
	V430	4,305	2,782				6	6	3,050	2,925	4,908
	V450	4,505	2,932				6	6	3,000	2,875	4,933
	V470	4,705	3,082				6	6	2,960	2,835	4,945
V500	5,005	3,182	6	6	2,900	2,775	4,962				
2-STAGE FULL FREE LIFT	VF/VS295	2,976	2,082	913	1,377	1,377	6	6	3,200	3,200	4,846
	VF/VS325	3,276	2,232	1,063	1,527	1,527	6	6	3,200	3,200	4,869
	VF/VS345	3,476	2,332	1,163	1,627	1,627	6	6	3,200	3,075	4,895
3-STAGE FULL FREE LIFT	TF370/TS370	3,705	1,882	702	1,112	1,112	6	6	3,190	3,065	4,999
	TF400/TS400	4,005	1,982	802	1,212	1,212	6	6	3,120	2,995	5,021
	TF430/TS430	4,305	2,082	902	1,312	1,312	6	6	3,060	2,935	5,030
	TF450/TS450	4,505	2,182	1,002	1,412	1,412	6	6	3,010	2,885	5,072
	TF470/TS470	4,705	2,232	1,052	1,462	1,462	6	6	2,980	2,855	5,087
	TF500/TS500	5,005	2,332	1,152	1,562	1,562	6	6	2,500	2,795	5,111
	TF550/TS550	5,505	2,532	1,352	1,762	1,762	6	6	2,200	2,695	5,156
	TF600/TS600	6,005	2,732	1,552	1,962	1,962	6	6	1,500	2,605	5,200
	TF650/TS650	6,505	2,932	1,752	2,162	2,061	3	3	1,450	2,175	5,244
	TF700/TS700	7,005	3,132	1,952	2,362	2,261	3	3	1,250	1,775	5,289
	TF370/TS370	3,705	1,882	702	1,112	1,112	6	6	3,190	3,065	4,999
	TF400/TS400	4,005	1,982	802	1,212	1,212	6	6	3,120	2,995	5,021
	TF430/TS430	4,305	2,082	902	1,312	1,312	6	6	3,060	2,935	5,030
	TF450/TS450	4,505	2,182	1,002	1,412	1,412	6	6	3,010	2,885	5,072
	TF470/TS470	4,705	2,232	1,052	1,462	1,462	6	6	2,980	2,855	5,087
	TF500/TS500	5,005	2,332	1,152	1,562	1,562	6	6	2,500	2,795	5,111
	TF550/TS550	5,505	2,532	1,352	1,762	1,762	6	6	2,200	2,695	5,156
	TF600/TS600	6,005	2,732	1,552	1,962	1,962	6	6	1,500	2,605	5,200
	TF650/TS650	6,505	2,932	1,752	2,162	2,033	3	3	1,450	2,175	5,244
	TF700/TS700	7,005	3,132	1,952	2,362	2,233	3	3	1,250	1,775	5,289
4-STAGE FULL FREE LIFT	QF610	6,115	2,136	967	1,514	1,514	3	3	1,800	1,685	5,368
	QF660	6,615	2,336	1,167	1,714	1,714	3	3	1,600	1,585	5,428
	QF700	7,015	2,436	1,267	1,814	1,814	3	3	1,300	1,295	5,458
	QF745	7,465	2,586	1,417	1,964	1,917	3	3	1,000	765	5,501
	QF790	7,915	2,736	1,567	2,070	1,917	3	3	800	375	5,604

※ TF-Mast : Wide Visible 3-Stage Full Free Lift Mast with 1 Free Lift Cylinders  
 ※ TS-Mast : Wide Visible 3-Stage Full Free Lift Mast with 2 Free Lift Cylinders

※ : Standard

### 35B-9U



Mast Type	Maximum Fork Height	Overall Height (Lowered)	Free lift height			Tilt Angle		Load capacity (500mm LC) w/o side shift	Load capacity (500mm LC) w/ side shift	Truck Weight (Unloaded)	
			W/ Load Backrest	W/o Load Backrest	W/o Load Backrest (3/4-SPOOL)	Fwd	Bwd				
		mm	mm	mm	mm	mm	deg	deg	kg	kg	
2-STAGE LIMITED FREE LIFT	V300	3,005	2,093	115	115	115	6	10	3,500	3,500	4,999
	※V330	3,305	2,243				6	10	3,500	3,500	5,020
	V350	3,505	2,343				6	10	3,500	3,500	5,028
	V370	3,705	2,493				6	10	3,500	3,500	5,046
	V400	4,005	2,643				6	10	3,500	3,430	5,063
	V430	4,305	2,793				6	6	3,500	3,350	5,108
	V450	4,505	2,943				6	6	3,450	3,300	5,133
	V470	4,705	3,043				6	6	3,400	3,250	5,145
V500	5,005	3,193	6	6	3,300	3,150	5,162				
2-STAGE FULL FREE LIFT	VF/VS295	2,976	2,093	913	1,377	1,377	6	6	3,500	3,500	5,046
	VF/VS325	3,276	2,243	1,063	1,527	1,527	6	6	3,500	3,430	5,069
	VF/VS345	3,476	2,343	1,163	1,627	1,627	6	6	3,500	3,350	5,095
3-STAGE FULL FREE LIFT	TF370	3,705	1,893	713	1,177	1,177	6	6	3,500	3,430	5,199
	TF400	4,005	1,993	813	1,277	1,277	6	6	3,500	3,350	5,221
	TF430	4,305	2,093	913	1,377	1,377	6	6	3,450	3,300	5,230
	TF450	4,505	2,193	1,013	1,477	1,477	6	6	3,400	3,250	5,272
	TF470	4,705	2,243	1,063	1,527	1,527	6	6	3,350	3,200	5,287
	TF500	5,005	2,343	1,163	1,627	1,627	6	6	2,650	2,500	5,311
	TF550	5,505	2,543	1,363	1,827	1,827	6	6	2,380	2,250	5,356
	TF600	6,005	2,743	1,563	2,027	2,027	6	6	1,700	1,550	5,400
	TF650	6,505	2,943	1,763	2,201	2,061	3	3	1,590	1,450	5,444
	TF700	7,005	3,143	1,963	2,401	2,261	3	3	1,350	1,250	5,489
	TS370	3,705	1,893	713	1,177	1,177	6	6	3,500	3,430	5,199
	TS400	4,005	1,993	813	1,277	1,277	6	6	3,500	3,350	5,221
	TS430	4,305	2,093	913	1,377	1,377	6	6	3,450	3,300	5,230
	TS450	4,505	2,193	1,013	1,477	1,477	6	6	3,400	3,250	5,272
	TS470	4,705	2,243	1,063	1,527	1,527	6	6	3,350	3,200	5,287
	TS500	5,005	2,343	1,163	1,627	1,627	6	6	2,650	2,500	5,311
	TS550	5,505	2,543	1,363	1,827	1,827	6	6	2,380	2,250	5,356
	TS600	6,005	2,743	1,563	2,027	2,027	6	6	1,700	1,550	5,400
	TS650	6,505	2,943	1,763	2,173	2,033	3	3	1,590	1,450	5,444
	TS700	7,005	3,143	1,963	2,373	2,233	3	3	1,350	1,250	5,489
4-STAGE FULL FREE LIFT	QF610	6,115	2,147	967	1,514	1,514	3	3	1,920	1,800	5,568
	QF660	6,615	2,347	1,167	1,714	1,714	3	3	1,720	1,600	5,628
	QF700	7,015	2,447	1,267	1,814	1,814	3	3	1,410	1,300	5,658
	QF745	7,465	2,597	1,417	1,964	1,917	3	3	1,100	1,000	5,701
	QF790	7,915	2,747	1,567	2,070	1,917	3	3	800	700	5,804

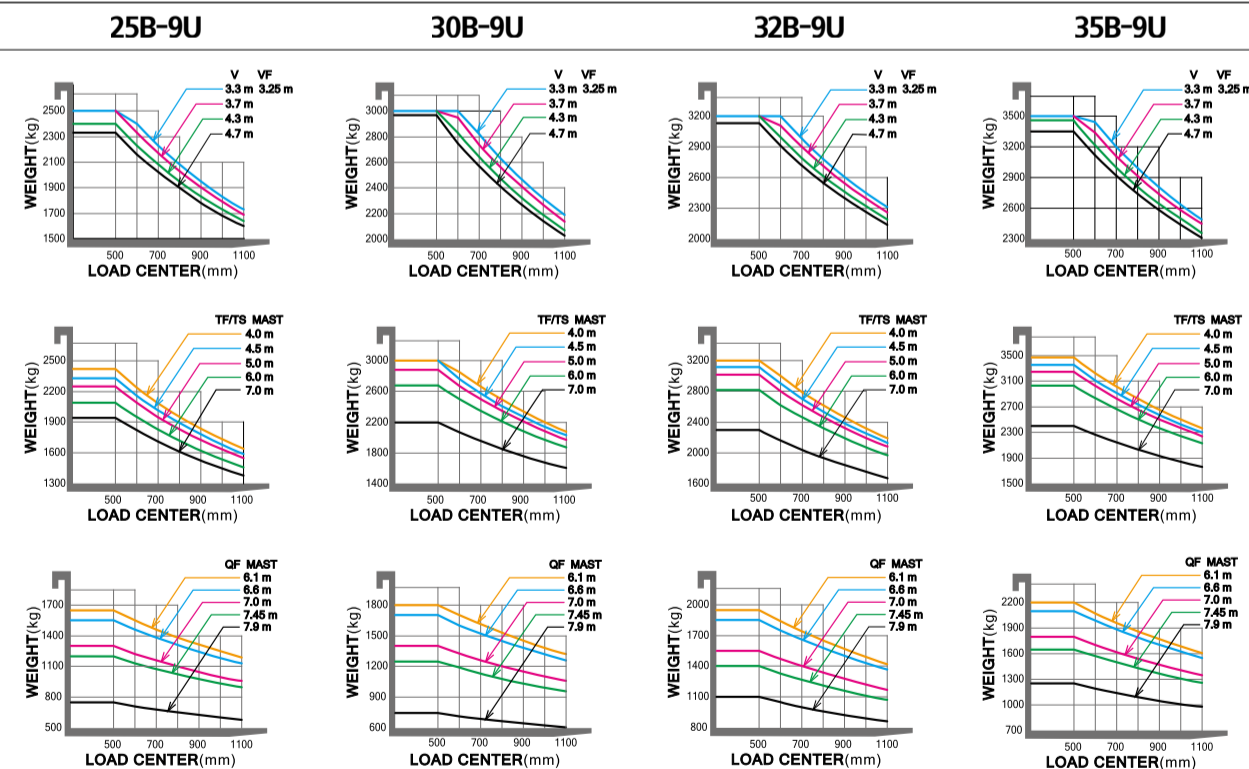
※ TF-Mast : Wide Visible 3-Stage Full Free Lift Mast with 1 Free Lift Cylinders  
 ※ TS-Mast : Wide Visible 3-Stage Full Free Lift Mast with 2 Free Lift Cylinders

※ : Standard

# New 9 Series

## 25/30/32/35B-9U

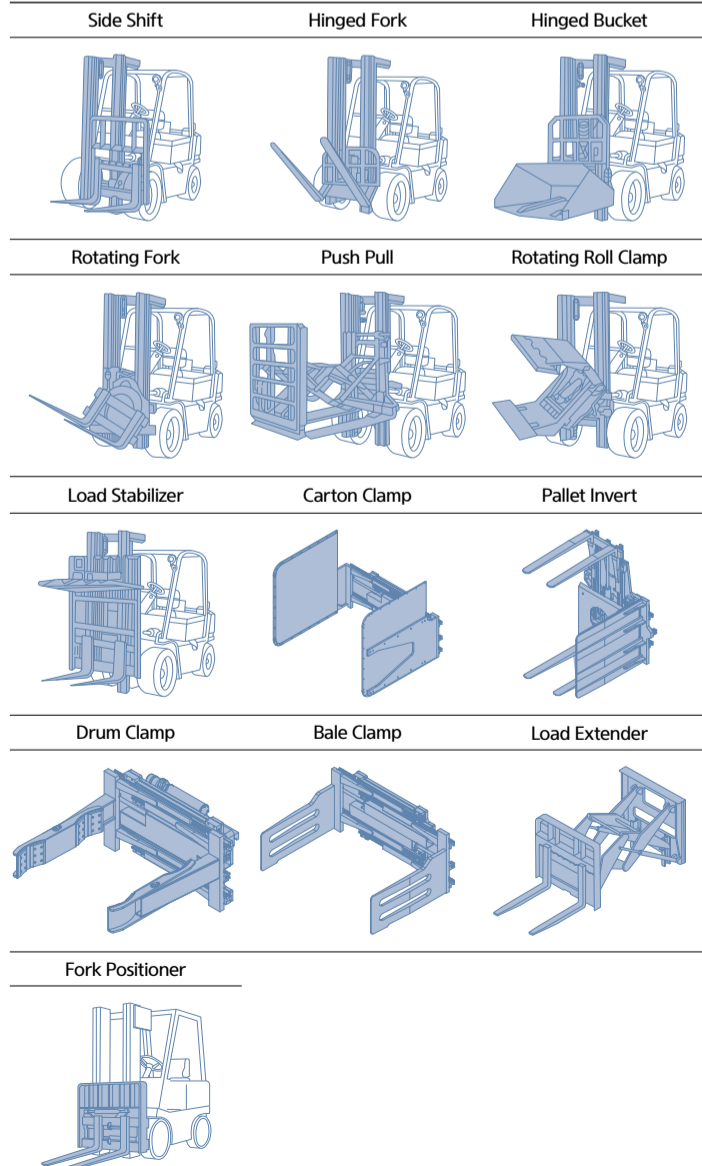
### Load Capacity



### Optional Items

- Fork(mm)**  
 25B-9U : 900/1,000/1,050(STD)/1,200/1,350/1,500/1,650/1,800/2,100  
 30/32/35B-9U : 900/1,050(STD)/1,150/1,200/1,350/1,500/1,650/1,800/1,970/2,120/2,300/2,400
- Integral side shift**
- Tire :**  
 Solid (STD) / pneumatic / non-marking Wide [25/30/32B-9U : Front(23X10-12)]
- Finger Tip Control**
- Cold Strage :** Applicable to working conditions of up to -30°C
- M.C.V :** 2-Spool(STD), 3-Spool, 4-Spool
- Auto fork leveling**
- Load weight indicator**
- Side battery removal**
- Cabin (one-door)**  
 ① FRONT + ROOF + REAR  
 ② FRONT + ROOF + REAR + DOOR  
 ③ FRONT + ROOF + REAR + DOOR + HEATER

### Various Attachments



\* Exterior designs and forklift options in this catalog may change for improvement

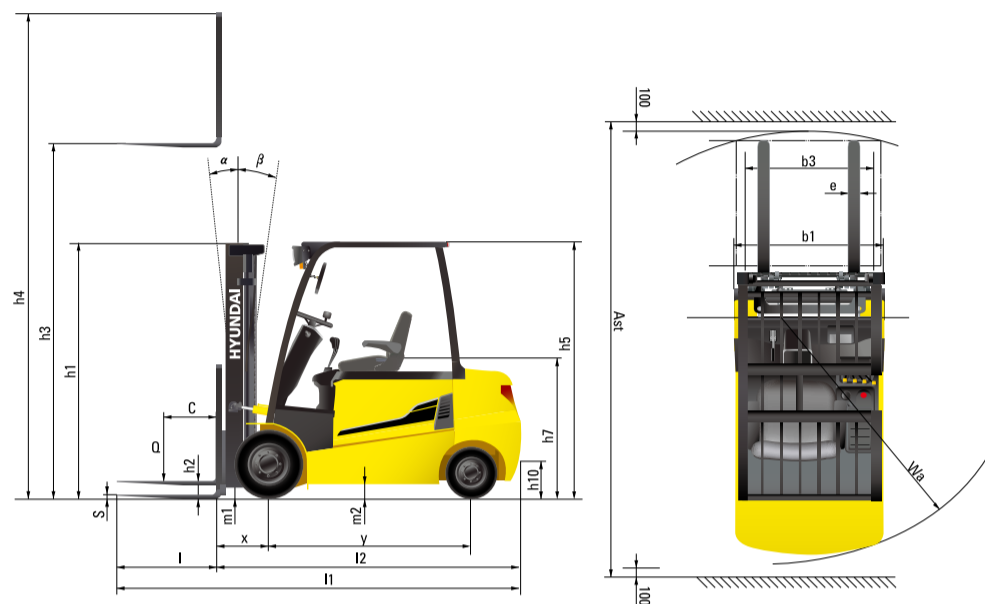
Specification



DISTINGUISHING MARK		HYUNDAI			
1.1	Manufacturer (Abbreviation)	HYUNDAI			
1.2	Manufacturer's Type Designation	25B-9U	30B-9U	32B-9U	35B-9U
1.3	Drive : Electric (Battery Or Mains), Diesel, Petrol, Fuel Gas	Electric	Electric	Electric	Electric
1.4	Type Of Operation: Hand, Pedestrian, Standing, Seated, Order-Picker	seated	seated	seated	seated
1.5	Load Capacity / Rated Load	kg 2,500	3,000	3,200	3,500
1.6	Load Center Distance	c mm 500	500	500	500
1.8	Load Distance, Center Of Drive Axle To Fork	x mm 458	458	458	470
1.9	Wheelbase	y mm 1,400	1,600	1,600	1,600
WEIGHT					
2.1	Service Weight	kg 4,360	4,633	4,820	5,020
2.2	Axle Loading, Loaded Front / Rear	kg 6,016 / 844	6,812 / 820	7,095 / 925	7,537 / 983
2.3	Axle Loading, Unloaded Front / Rear	kg 1,805 / 2,555	2,016 / 2,617	1,980 / 2,840	1,915 / 3,105
TIRES, CHASSIS					
3.1	Tires : Solid Rubber, Superelastic, Pneumatic, Polyurethane	SE, P	SE, P	SE, P	SE, P
3.2	Tire Size, Front	23X9-10	23X9-10	23X9-10	23X10-12
3.3	Tire Size, Rear	18X7-8	18X7-8	18X7-8	18X7-8
3.5	Wheels, Number Front / Rear (X = Driven Wheels)	2x2	2x2	2x2	2x2
3.6	Tread, Front	mm 993	993	993	1005
3.7	Tread, Rear	mm 980	980	980	980
DIMENSIONS					
4.1	Tilt Of Mast / Fork Carriage Forward / Backward	degrees 6 / 10	6 / 10	6 / 10	6 / 10
4.2	Height, Mast Lowered	h1 (mm) 2,162	2,162	2,232	2,243
4.3	Free Lift	h2 (mm) 115	115	115	115
4.4	Lift Height	h3 (mm) 3,300	3,300	3,300	3,300
4.5	Height, Mast Extended	h4 (mm) 4,485	4,485	4,485	4,485
4.7	Height Of Overhead Guard (Cabin)	h5 (mm) 2,230	2,230	2,230	2,230
4.8	Seat Height / Stand Height Rel. To Sip	h7 (mm) 1,275	1,275	1,275	1,275
4.12	Coupling Height	h10 (mm) 325	325	325	325
4.19	Overall Length	l1 (mm) 3,345	3,535	3,553	3,640
4.20	Length To Face Of Forks	l2 (mm) 2,295	2,485	2,503	2,590
4.21	Overall Width	b1 (mm) 1,200	1,200	1,200	1,250
4.22	Fork Dimensions	l x e x s (mm) 1,050x100x45	1,050x122x45	1,050x122x45	1,050x122x45
4.23	Fork Carriage Iso 2328, Class / Type A, B	II/A	III/A	III/A	III/A
4.24	Fork-Carriage Width	b3 (mm) 1,102	1,102	1,102	1,102
4.31	Ground Clearance, Below Mast, Loaded	m1 (mm) 117	117	117	128
4.32	Ground Clearance, Center Of Wheelbase	m2 (mm) 130	130	130	130
4.33	Aisle Width For Pallets 1000 x 1200 Crossways (LxW)	Ast (mm) 3,637	3,829	3,843	3,896
4.34	Aisle Width Of Pallets 800 x 1200 Crossways (W L)	Ast (mm) 3,803	4,009	4,023	4,076
4.35	Turning Radius	Wa (mm) 1,940	2,150	2,165	2,205

PERFORMANCE DATA					
5.1	Travel Speed, Loaded / Unloaded	km/h	17 / 18	17 / 18	17 / 18
5.2	Lift Speed, Loaded / Unloaded	mm/s	410 / 610	340 / 500	330 / 500
5.3	Lowering Speed, Loaded / Unloaded	mm/s	500 / 450	500 / 450	500 / 450
5.6	Max. Drawbar Pull, Loaded / Unloaded	N	14,710 / 14,690	14,640 / 14,700	14,580 / 14,660
5.8	Max. Gradeability, Loaded	%(°)	20(11.3)	19 (10.8)	18 (10.2)
5.10	Service Brake		Hydraulic	Hydraulic	Hydraulic
ELECTRIC-MOTOR					
6.1	Drive Motor Rating S2 60 Min	kw	7.0x2	7.0x2	7.0x2
6.2	Lift Motor Rating At S3 15%	kw	17	17	17
6.4	Battery Voltage, Nominal Capacity K5	V/Ah	48 / 660	48 / 715	48 / 715
6.5	Battery Weight (Min.)	kg	1,090	1,150	1,150
	Battery Compartment Dimensions L/W/H	mm	1,035/802/540	1,035/1,000/540	1,035/1,000/540
ADDITION DATA					
8.1	Type Of Drive Control		AC	AC	AC

Dimension



\* Exterior designs and forklift options in this catalog may change for improvement

MEMO



