



■ Some of the photos may include optional equipment.

MOVING YOU FURTHER

HYUNDAI MATERIAL HANDLING Applied Tier 4 Engine

70L-7A



Head Office (Sales office)

First tower, 55, Bundang-ro, Bundang-gu, Seongnam-si, Gyeonggi-do, Korea

PLEASE CONTACT

Blank white rectangular area for contact information.

www.hyundai-mh.com

2020. 09 Rev 7



Beyond the Limits

Hyundai introduces a new line of 7A series LPG forklift trucks. Excellent power and performance make your business more profitable.

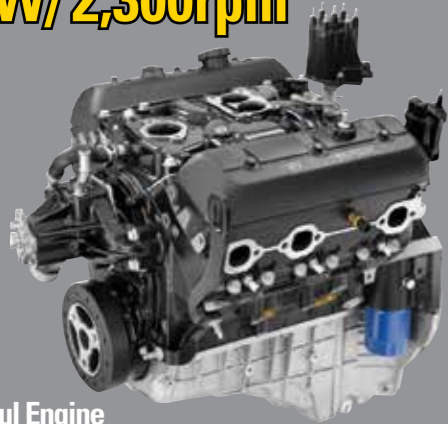


■ Some of the photos may include optional equipment.

The new master on the job-site!

Smooth running, efficient and ergonomically designed, 70L-7A series are made to meet your needs.

78kW/2,300rpm



Powerful Engine PSI 4.3L Engine

Market approved quality of PSI 4.3L engine ensures incomparable performance, durability and additional value to the machine. Powerful and efficient engine provides excellent fuel economy and excellent torque for improved operation.
(EPA/CARB Tier-IV Certified)

Fast and Stable Performance

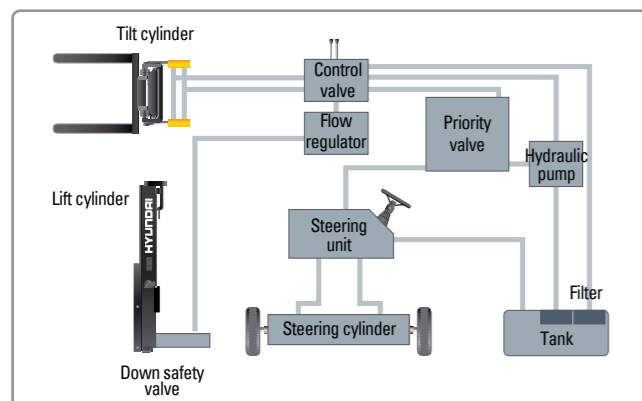
Being able to quickly raise and lower the mast, as well as tilt it forward and backward, provides the best operational conditions during unloading.

When the truck is fully loaded, mast lowering speed is carefully controlled to ensure safety by the down control valve.

Mast(Lift and Tilt) Look System is standard.



Some of the photos may include optional equipment.



State-of-the-art Hydraulic System

The latest large-capacity hydraulic system reacts quickly during operation, and a low-noise control valve increases both efficiency and durability.



Fully Hydrostatic Power Steering

A hydraulic steering system always guarantees smooth and flexible steering, preventing overrun and kick-back.



Increased Mast Tilting Angle

Utilizing the mast tilting angle of 15 degrees forward and 10 degrees backward, the operator can safely and rapidly perform loading and unloading jobs.

Faster Travel Speed & Better Gradability

The powerful high-output engine provides greater acceleration, better gradability and faster travel speed on any tough terrains or slopes.



Gradability(Loaded)
70L-7A : 40.6%

Travel Speed(Unloaded)
70L-7A : 22.4 km/h

Ergonomic operator friendly compartment design!

A design based on human engineering relieves fatigue and increases operator's efficiency.

Operator Friendly Gauges and Water-resistant Monitor Panel



- 1 Parking brake lamp
- 2 Turn lamp
- 3 Engine oil warning lamp
- 4 Transmission oil temperature warning lamp
- 5 Battery charging warning lamp
- 6 Air cleaner filter warning light
- 7 Working light indicator
- 8 Seat belt warning
- 9 Water temperature gauge
- 10 OPS warning (option)
- 11 Hour meter
- 12 Engine check lamp
- 13 Brake oil warning lamp



Full Suspension Seat

An attractive and adjustable seat, based on a human engineering design, provides great comfort, safety and durability.



New High Visibility for Safe Operation

The operator is able to work with increased safety and accuracy due to a wider view mast.



Some of the photos may include optional equipment.



Ergonomically Positioned Pedals

Based on human engineering, the accelerator, brake and inching pedals are optimally positioned for convenience while operating the equipment.



Cup Holder & Console Box

Additional storage spaces are located inside the operating space for operator's convenience.



Quick Response of Operating Control Levers

Only minimal operator's effort is required for precise, safe and productive control.



Adjustable Steering Wheel

Steering wheel with horn button can be adjusted by a lever on the right-hand side for the most comfortable operator position.

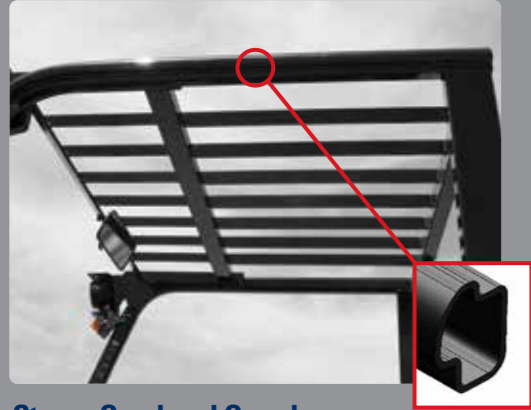


Easy and Safe Shift Lever

A single lever on the left side of the steering column gives the operator fast, easy control of direction. The lever must be in the neutral position before the engine can be started.

Danger-free through high durability!

Safety and durability are priorities in design of the equipment.



Strong Overhead Guard

The safety overhead guard meets ISO 6055 regulation and protects the operator during hazardous jobs.



Parking brake

Ratchet type parking brake requires less effort the operator to set.

Highly Durable Split type Drive Axle

The planetary reduction drive axle smoothly delivers desired torque to the drive wheels.



Some of the photos may include optional equipment.

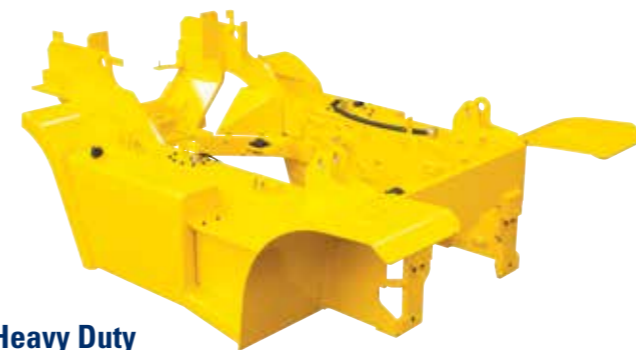
OPSS (Operator Presence Sensing System)

Control of mast tilting, lifting and lowering is not possible through operation of the appropriate control when the operator is not in the seated position. (Option)



Large Footboard & Hand Grip

Wide "open" step offers convenience and safety when entering and exiting truck.



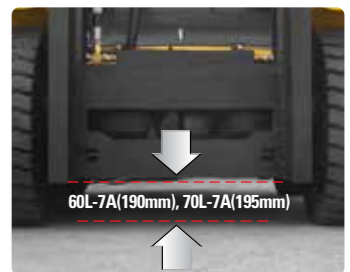
Heavy Duty Single Unit Frame

Heavy duty single unit type frame, designed on the basis of accurate structural analysis, guarantees durability and safety.



Bright, Protected Headlights

Bright, Protected head lights are positioned for exceptional visibility.



Ground Clearance

The engine and transmission are assembled horizontally and positioned high in the frame to protect major components during operation on rugged surface.

Designed for quick and easy service!

An ideal arrangement of component parts ensures easy access and convenience for maintenance.



Large Engine Hood
Highly accessible engine compartment assures fast and efficient maintenance.



Easy Change Air Cleaner
The air filter is readily accessible for cleaning or replacement.



Up-to-date Cooling System



■ Some of the photos may include optional equipment.



Brake Fluid Reservoir with Level Switch
When brake oil level became lower than Min., the warning lamp on the cluster lights on.



Easy Maintenance Oil Check
The T/M oil level can be checked easily without any disassembly.



Expansion Bellows
The expansion bellows absorbs vibration and reduces noise generated from the exhaust system and also extends the life cycle of exhaust system.



Grease Fittings
Grease fittings are installed for fast access to steering axle center pin when doing your service checks.



Maintenance Free Battery



Large Tool Box
Additional tool box located in machine side for operator's convenience.



Easy-to-access Reservoir Tank



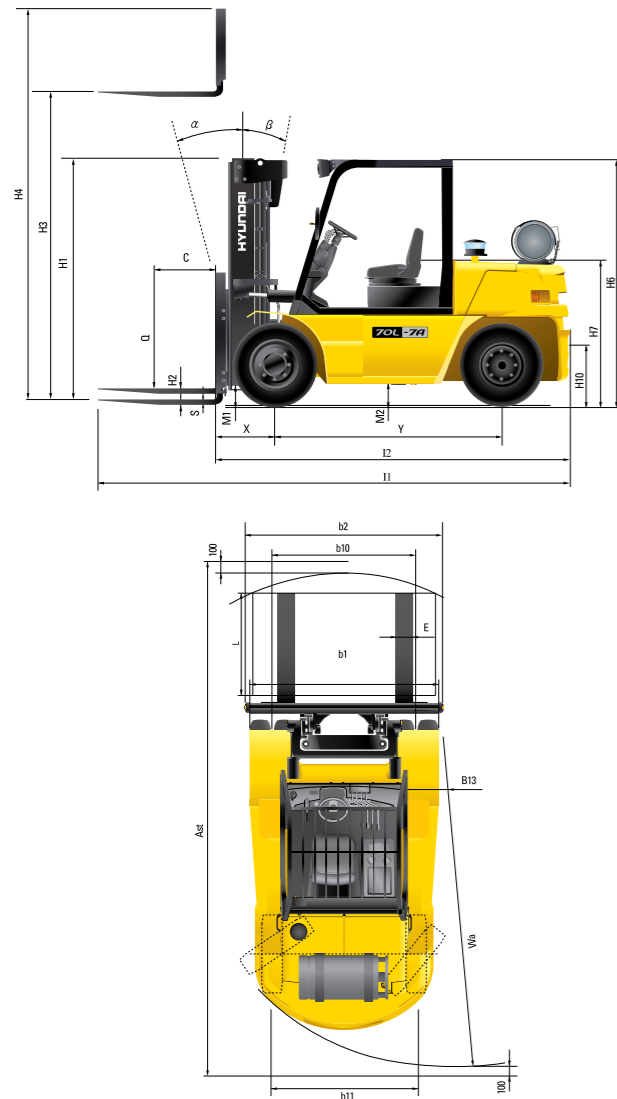
Wing Cover Locking System

Optional Items

- **FORK (mm)** : 1200(STD), 1350, 1500, 1800, 2000, 2300, 2400
- **TIRE** : SOLID (SUPERELASTIC), NON-MARKING
- **SEAT** : SEAT BELT, ARM REST
- **INTERNAL PIPING**
- **CABIN & HEATER** : CABIN, HEATER
- **MUFFLER** : HORIZONTAL
- **LPG TANK CLAMP** : DUAL
- **MASTER SWITCH**
- **ELE.BEACON**
- **HAZARD SWITCH**
- **MCV** : 3-SPOOL / 4-SPOOL / 5-SPOOL
- **SIDE SHIFT**
- **INTEGRAL FORK POSITIONER CARRIAGE**
- **INTEGRAL SIDE SHIFT CARRIAGE**
- **INTEGRAL S/S WITH F/P CARRIAGE**

※ The options in this brochure are subject to change to improve the performance of the forklift.

Dimension



Specification

Identification		
1.1	Manufacturer	Hyundai
1.2	Manufacturer's type designation	70L-7A
1.3	Drive: electric (battery or mains), diesel, petrol, fuel gas, manual	LP
1.4	Type of operation: hand, pedestrian, standing, seated, order-picker	seated
1.5	Load capacity / rated load	Q (kg) 7,000
1.6	Load center distance	c (mm) 600
1.8	Load distance, center of drive axle to fork	x (mm) 615
1.9	Wheelbase	y (mm) 2,300
Weights		
2.1	Service weight	kg 9,430
2.2	Axle loading, loaded front/rear	kg 14,564 / 1,866
2.3	Axle loading, unloaded front/rear	kg 3,867 / 5,564
Wheels, Chassis		
3.1	Tires: solid rubber, superplastic, pneumatic, polyurethane	Pneumatic
3.2	Tires size, front	8.25-15-14PR
3.3	Tires size, rear	8.25-15-14PR
3.5	Wheels, number front x rear (x=driven wheels)	4x2
3.6	Track width, front	b10 (mm) 1,578
3.7	Track width, rear	b11 (mm) 1,604
Basic Dimensions		
4.1	Mast / fork carriage tilt forward / backward (α/β)	degrees 15 / 10
4.2	Lowered mast height	h1 (mm) 2,515
4.3	Free lift	h2 (mm) 140
4.4	Lift height	h3 (mm) 3,030
4.5	Extended mast height	h4 (mm) 4,320
4.7	Overhead guard (cab) height	h5 (mm) 2,533
4.8	Seat height / standing height	h7 (mm) 1,455
4.12	Coupling height	h10 (mm) 511
4.19	Overall length	l1 (mm) 4,820
4.20	Length to face of forks	l2 (mm) 3,680
4.21	Overall width	b1 (mm) 2,088
4.22	Fork dimensions	s / e / l (mm) 65 x 150 x 1,200
4.23	Fork carriage ISO 2328, class / type A,B	Class IV
4.24	Fork-carriage width	b12 (mm) 2,068
4.31	Ground clearance, loaded, under mast	m1 (mm) 195
4.32	Ground clearance, centre of wheelbase	m2 (mm) 206
4.34.1	Aisle width for pallets 1000x1200 crossways	Ast (mm) 5,185
4.34.2	Aisle width for pallets 800x1200 lengthways	Ast (mm) 5,385
4.35	Turning radius	Wa (mm) 3,370
4.36	Smallest pivot point distance	b13 (mm) 1,224
Performance Data		
5.1	Travel speed, Unloaded	km/h 22.4
5.2	Lift speed, Loaded/Unloaded	mm/s 420 / 430
5.3	Lowering speed, Loaded/Unloaded	mm/s 500 / 450
5.6	Max. Drawbar pull, Loaded	N 67,302
5.8	Max. Gradeability, Loaded	% 40.6
5.10	Service brake	Hydraulic
Engine		
7.1	Engine manufacturer / type	PSI 4.3L
7.2	Engine power acc. to ISO 1585	kW/rpm 78 / 2,300
7.3	Maximum torque	kgf-m/rpm 34 / 1,400
7.4	No. of cylinder / cubic capacity	/cm ³ 6 / 4,294
Other Details		
8.1	Type of drive control	Power Shift
8.2	Operating pressure, system / attachments	bar 185 / 150
8.3	Oil volume for attachments	ℓ / min 76
8.4	Sound level at the driver's ear according to DIN 12053	dB(A) 82

※ The specifications in this brochure are subject to change for option.

MEMO